

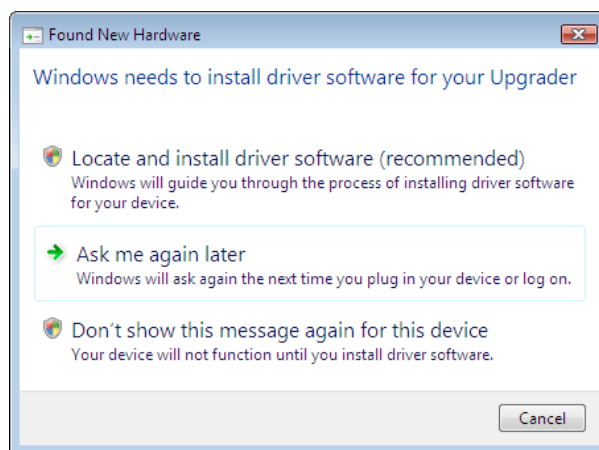
PerformanceBox/DriftBox: How to install the Upgrader Driver on VISTA.

For all steps of this how-to, leave the PB/DB USB cable connected to the computer in Upgrader mode.

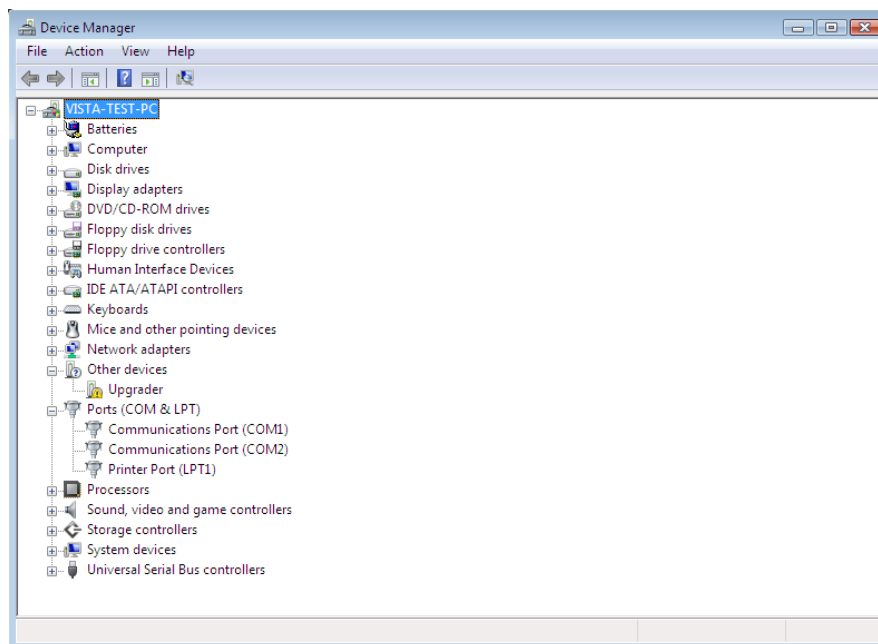
- 1) Connect the USB cable to the PB/DB and the computer then hold down the Mode button when connecting the power to the PB/DB. The Splash screen should show 'Racelogic Upgrader mode', with the current firmware version number and the message "Connect USB Cable"

An information bubble will appear in the bottom right of the screen showing windows attempting to install the driver for the "Upgrader".

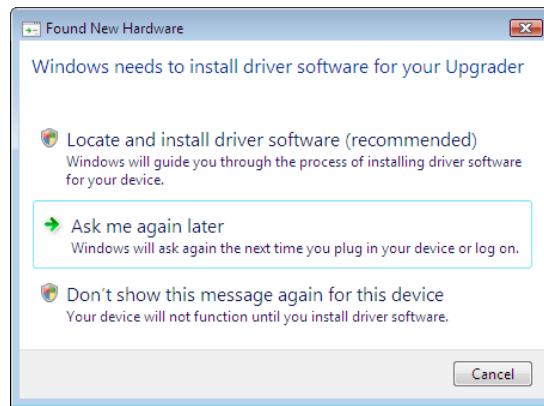
If Windows fails to automatically install the driver it will need to be told where the driver for 'Upgrader' is located and the following window will appear:



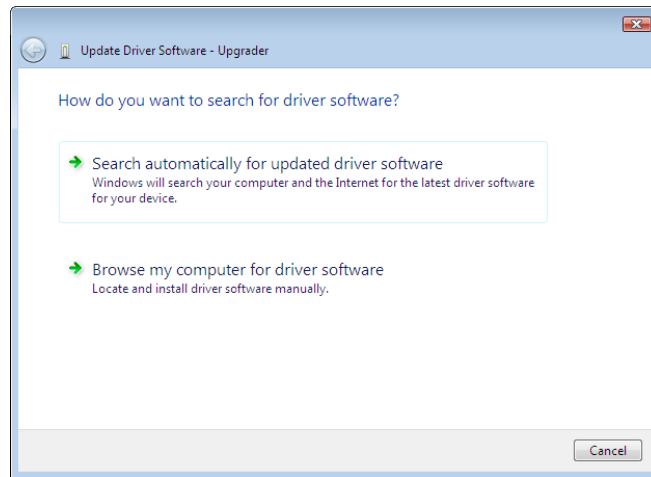
- 2) To check the status of the driver installation, Right click on 'My Computer' and select 'properties', click the 'Device Manager' in the top left of the pop up window. You should be able to see a branch called 'Other Devices' under which will be 'Upgrader' with a yellow warning triangle next to it.



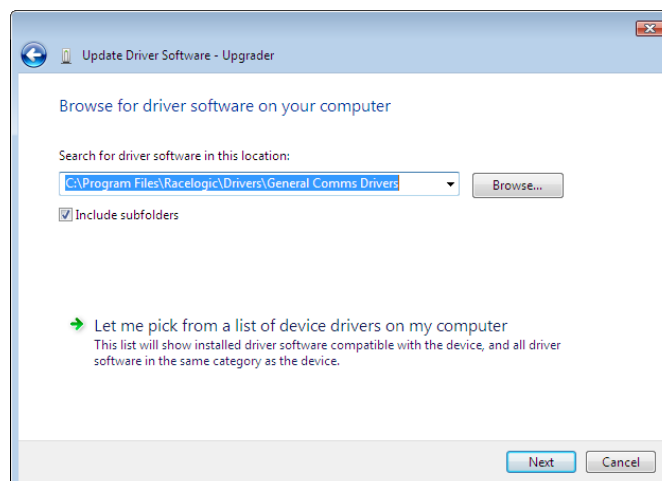
- 3) In the 'Found New Hardware' pop-up select 'cancel'



- 4) The following window will then appear: (This step can also be reached by expanding the 'Other Devices' branch, then right clicking on the 'Upgrader' option and selecting 'Update Driver Software')

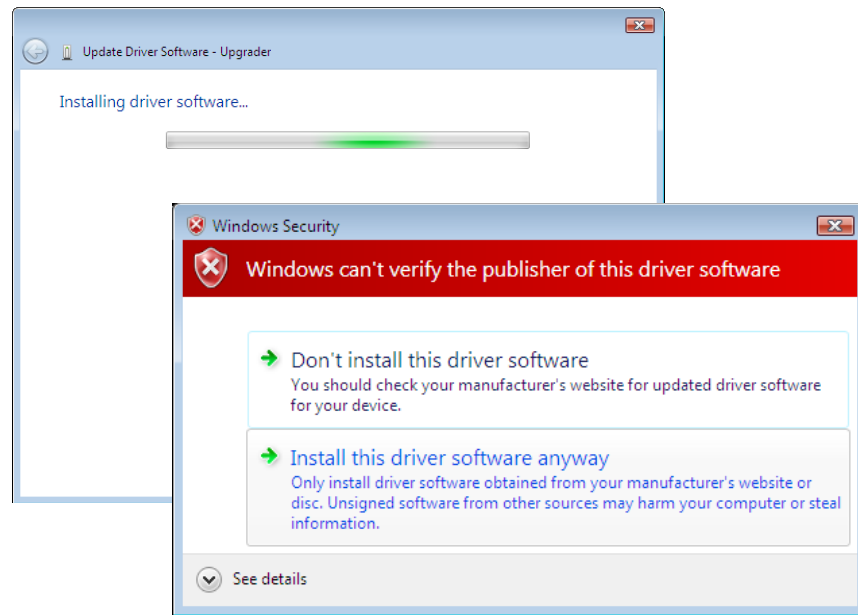


- 5) Select 'Browse my computer for driver software' and the following window will appear:

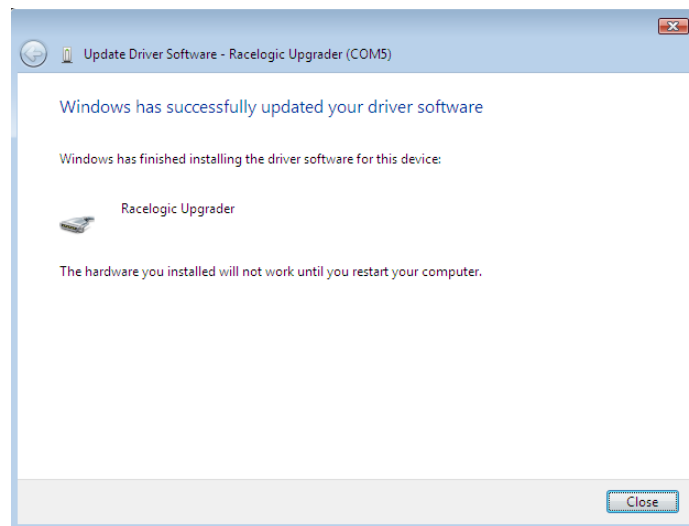


- 6) Browse to the following folder 'C:\Program Files\Racelogic\Drivers\General Comms Drivers' and click 'next'.

7) The following windows will appear:



8) Select 'Install this driver software anyway' and wait for the driver installation to continue. After a short while the driver will install and the following message will appear:



9) It is very important at this stage to reboot the computer. If this step is not performed the Upgrader software on the computer will not be able to correctly see the PB/DB.

Once the restart has been done 'Racelogic Upgrader' should be visible in 'Device Manager' under Ports (COM & LPT) with an assigned COM port number.

10) To perform a firmware upgrade, download the required upgrade file from the Racelogic website which has a '.RUF' extension. Make sure the PB/DB is powered in Upgrader mode and the USB cable is connected to the computer. Double click on this file and the Upgrader software will open. The upgrade should progress automatically and when finished will ask you to disconnect the USB cable to the PB/DB.

Once this has been done the Upgrader software will close and the PB/DB firmware will be upgraded. To verify remove then reconnect power and check the firmware version on the front panel of the box.